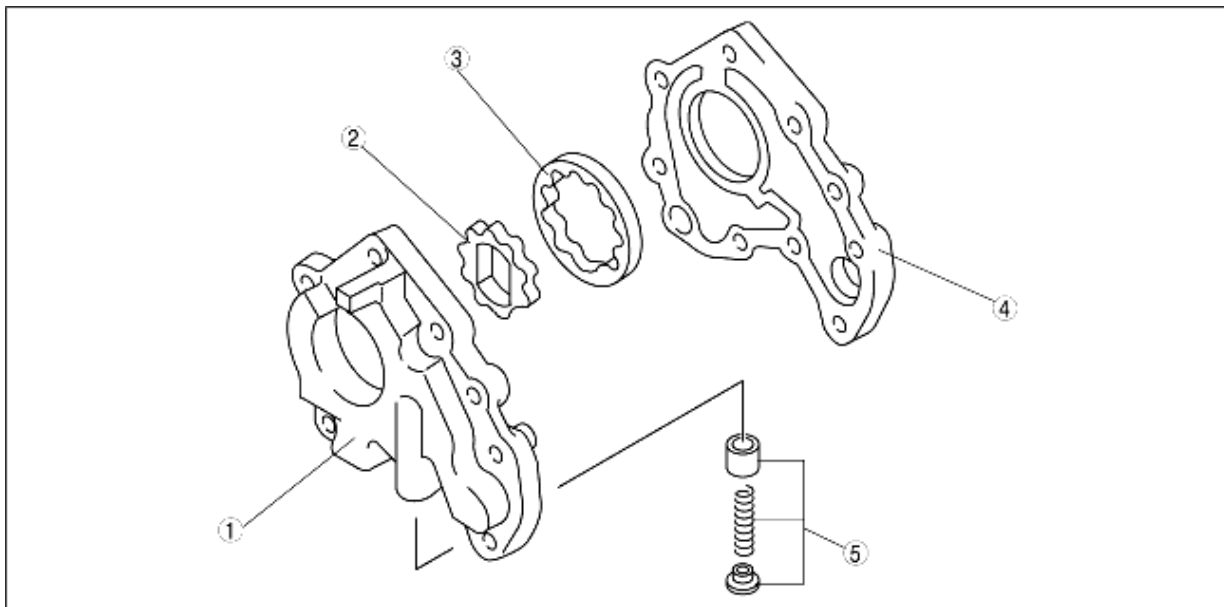


OIL PUMP CONSTRUCTION [ZJ, Z6]

B3E011101008T10

- An efficient and compact 9-lobe epitrochoid and 10-flank inner envelope type gear has been adopted for the oil pump.
- The oil pump consists of the oil pump body, inner rotor, outer rotor, relief valve, and oil pump cover.
- An aluminum alloy oil pump cover has been adopted to reduce weight.
- An oil pressure regulator with an adjusting oil pressure is built into the oil pump body.
- The oil pump is directly driven by the crankshaft to improve engine noise reduction.
- A lightweight and compact trochoid gear type oil pump with 9.5 mm {0.37 in} wide rotors (outer rotor, inner rotor) with excellent heat-resistant and noise reduction characteristics has been adopted. Due to this, oil discharge is stabilized.



B3E0111T012

1	Oil pump body (oil pressure regulator built-in)
2	Inner rotor
3	Outer rotor
4	Oil pump cover
5	Relief valve component

Oil pump

Item	Engine speed [rpm]	Specification
Oil discharge pressure (approx. quantity) [Oil temperature: 100 °C {212 °F}]	1,500	210- 270 {2.14-2.75, 30.5-39.2}
(kPa {kgf/cm ² , psi})	3,000	450-480 {4.59-4.89, 65.4-69.5}
Relief valve opening pressure (approx. quantity)	(kPa {kgf/cm ² , psi})	400-450 {4.08-4.59, 58.3-65.4}